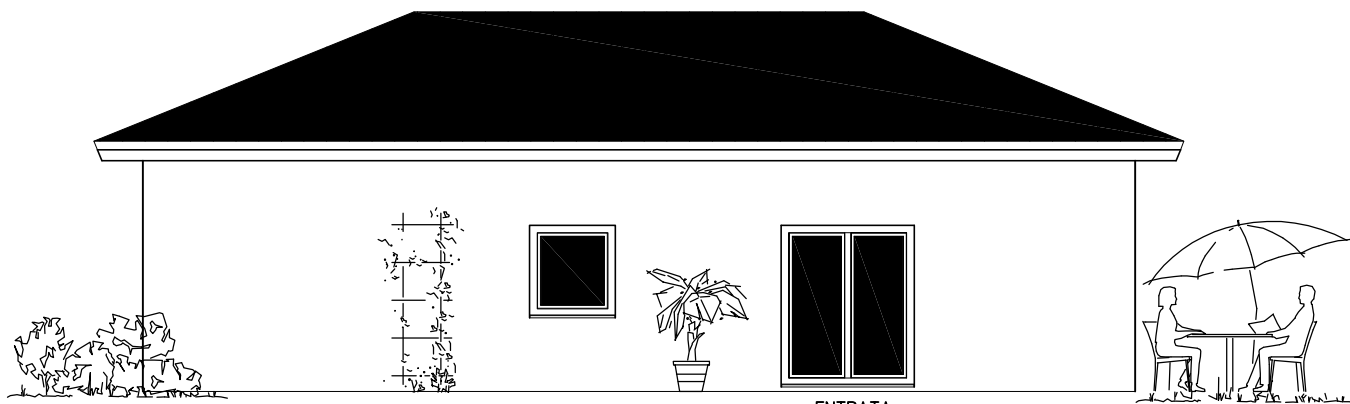


sinistra

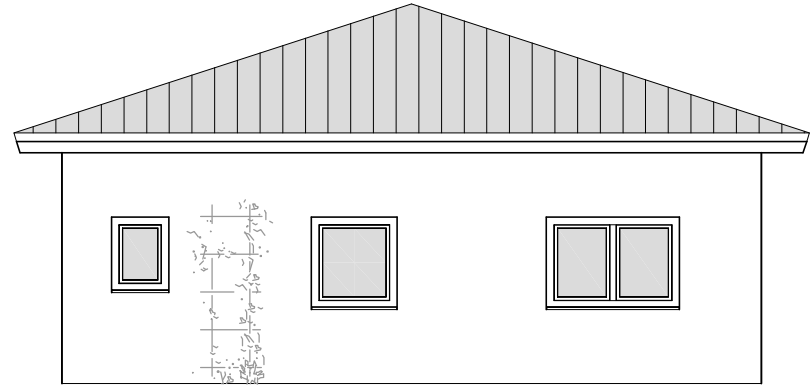


dietro

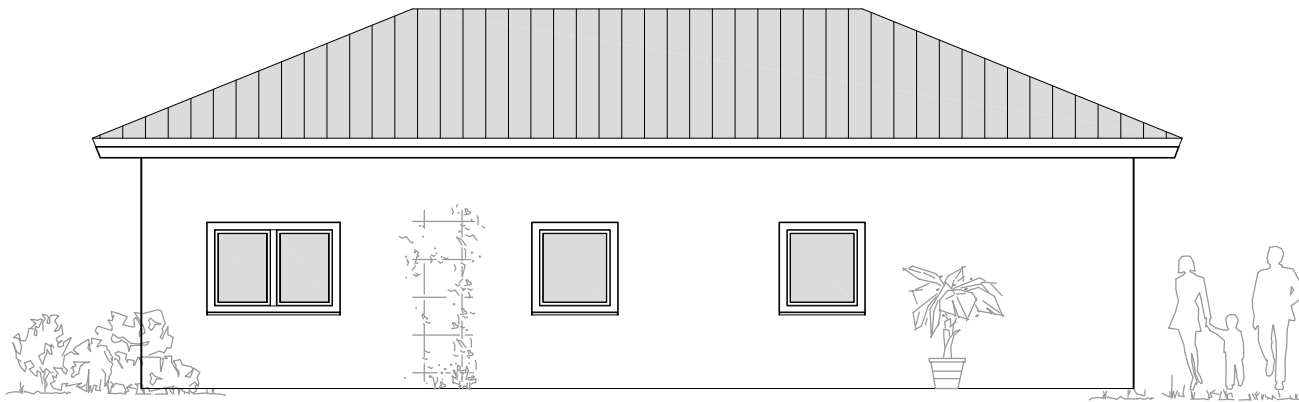
luogo, data                      committente                      consulente edile

RENSCH-HAUS GMBH · Ultrichshausen  
 Mottener Straße 13 · D-36148 Kalbach/Rhön  
 Tel. (09742) 91-0 · Fax (09742) 91-174  
 http://www.rensch-haus.com  
 eMail: info@rensch-haus.com

scala 1:100	disegno num. 6	data 26.11.09	elemento prospetto: dietro/sinistra
----------------	-------------------	------------------	--



destra



davanti

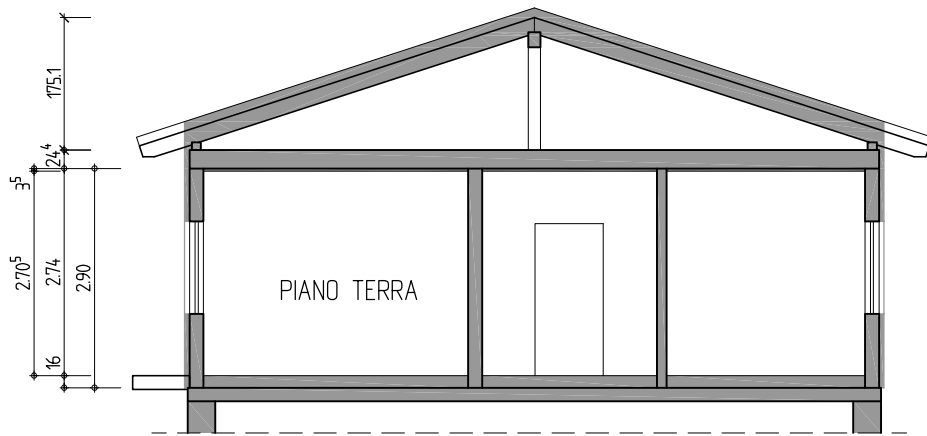
luogo, data                      committente                      consulente edile

RENSCH-HAUS GMBH · Ultrichshausen  
 Mottener Straße 13 · D-36148 Kalbach/Rhön  
 Tel. (09742) 91-0 · Fax (09742) 91-174  
 http://www.rensch-haus.com  
 eMail: info@rensch-haus.com

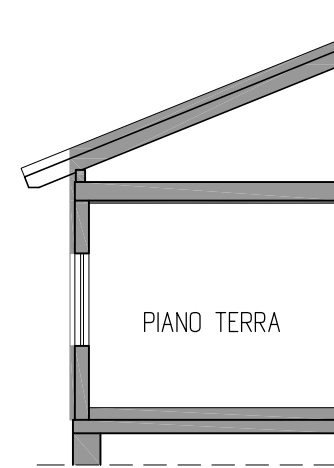
scala 1:100	disegno num. 5	data 26.11.09	elemento prospetto: davanti/destra
----------------	-------------------	------------------	---------------------------------------

925.0

PENDENZA DEL TETTO 18°



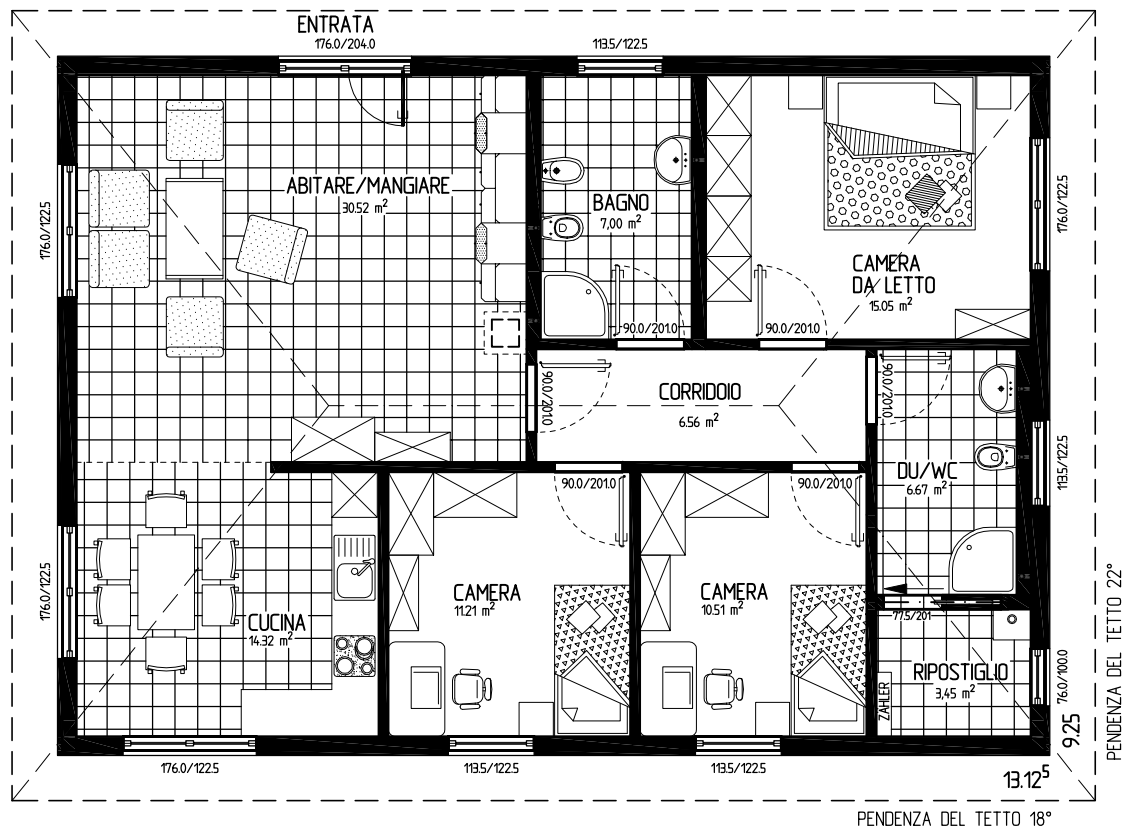
PENDENZA DEL TETTO 22°



luogo, data                      committente                      consulente edile

RENSCH-HAUS GMBH · Ultrichshausen  
 Mottener Straße 13 · D-36148 Kalbach/Rhön  
 Tel. (09742) 91-0 · Fax (09742) 91-174  
<http://www.rensch-haus.com>  
 eMail: [info@rensch-haus.com](mailto:info@rensch-haus.com)

scala 1:100	disegno num. 4	data 26.11.09	elemento sezione
----------------	-------------------	------------------	---------------------



luogo, data                      committente                      consulente edile

RENSCH-HAUS GMBH · Ultrichshausen  
Mottener Straße 13 · D-36148 Kalbach/Rhön  
Tel. (09742) 91-0 · Fax (09742) 91-174  
http://www.rensch-haus.com  
eMail: info@rensch-haus.com

scala 1:100	disegno num. 1	data 26.11.09	elemento piano terra
----------------	-------------------	------------------	-------------------------