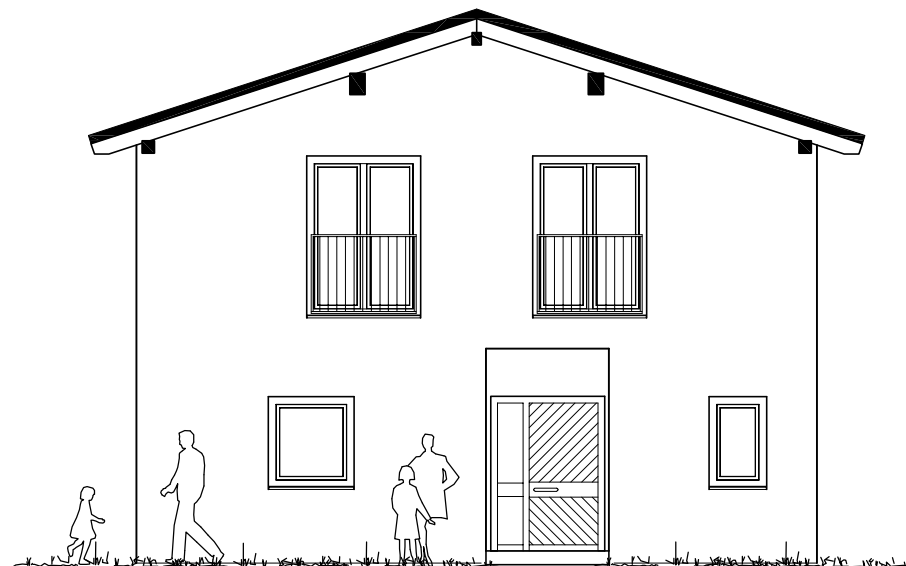
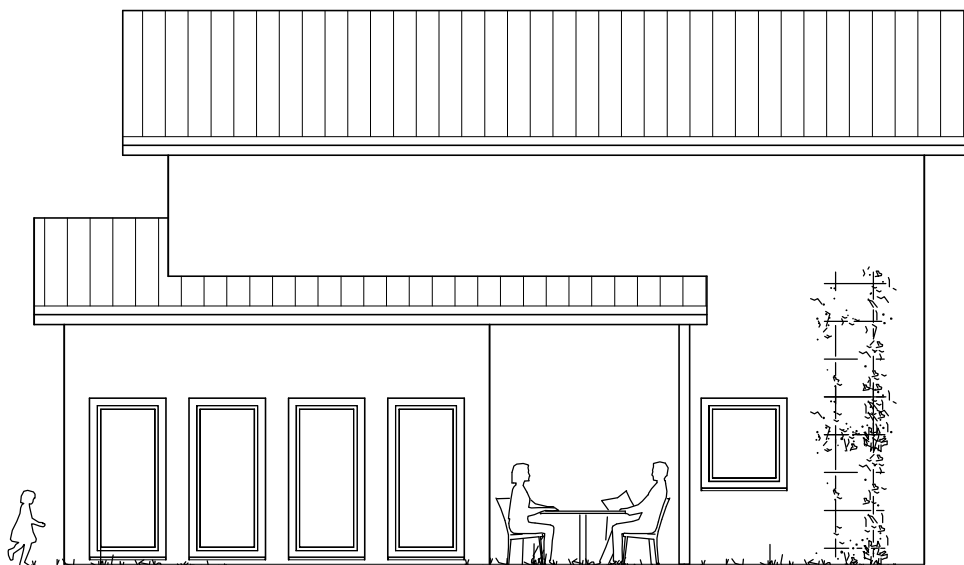


Casa La Spezia M



sinistra



dietro

luogo, data committente consulente edile

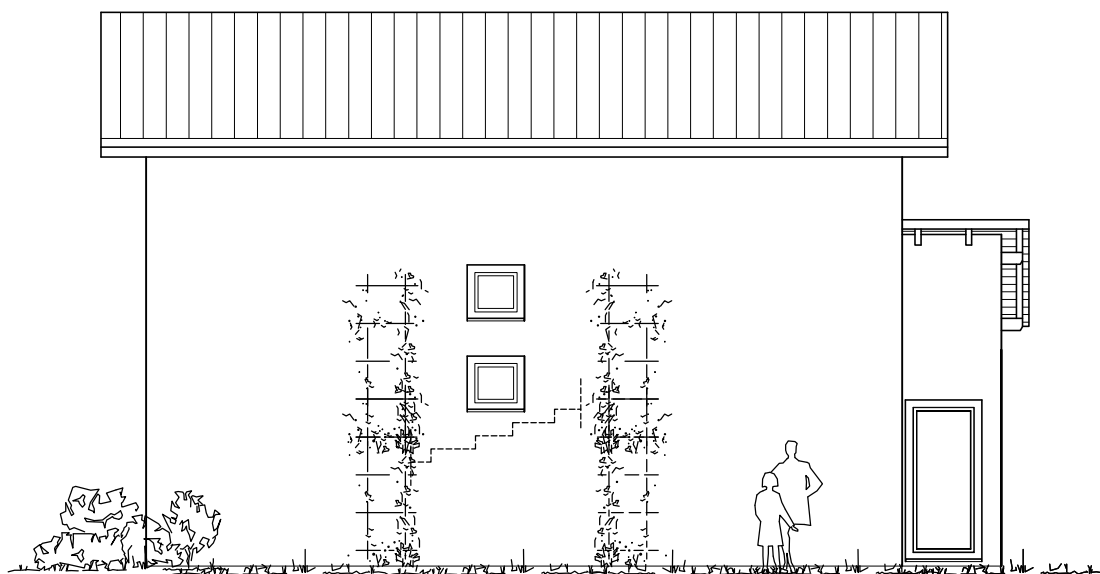
RENSCH-HAUS GMBH · Ultrichshausen
Mottener Straße 13 · D-36148 Kalbach/Rhön
Tel. (09742) 91-0 · Fax (09742) 91-174
<http://www.rensch-haus.com>
eMail: info@rensch-haus.com

scala 1:100	disegno num. 5	data 07.09.10	elemento prospetto: dietro/sinistra
----------------	-------------------	------------------	--

Casa La Spezia M



destra



davanti

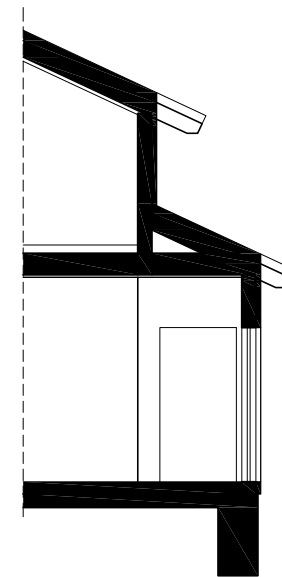
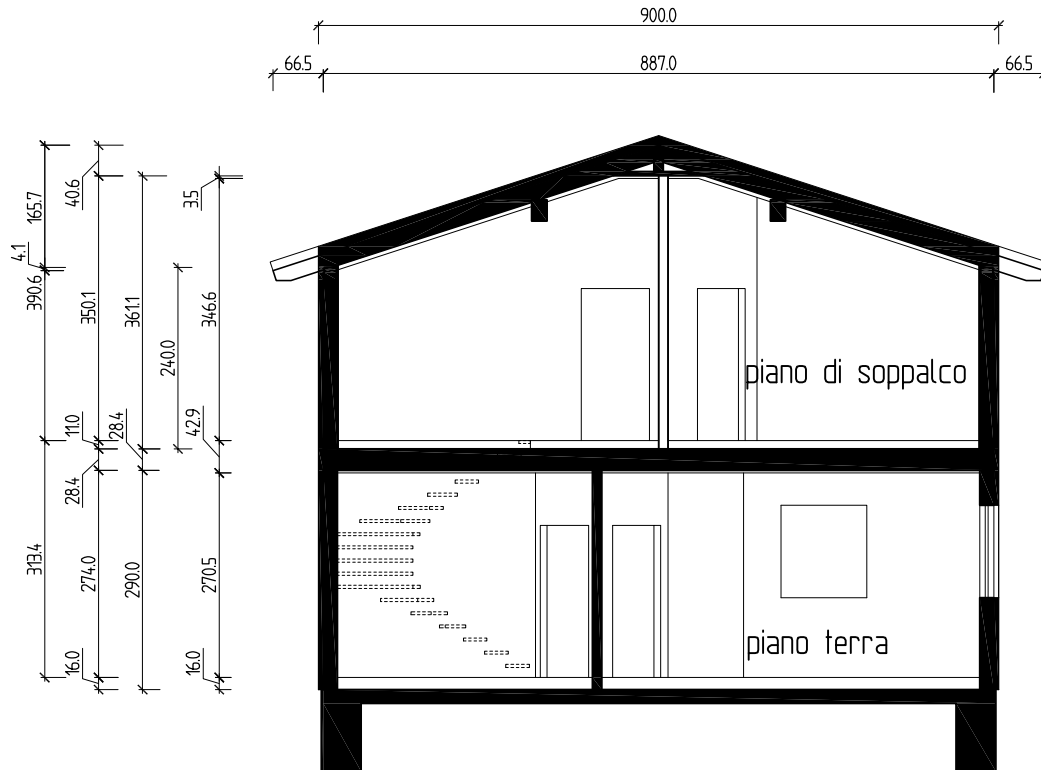
luogo, data committente consulente edile

RENSCH-HAUS GMBH · Ultrichshausen
Mottener Straße 13 · D-36148 Kalbach/Rhön
Tel. (09742) 91-0 · Fax (09742) 91-174
<http://www.rensch-haus.com>
eMail: info@rensch-haus.com

scala 1:100	disegno num. 4	data 07.09.10	elemento prospetto: davanti/destra
----------------	-------------------	------------------	---------------------------------------

Casa La Spezia M

INCLINAZIONE 18°
PARETE DI BANCHINA 2.40M

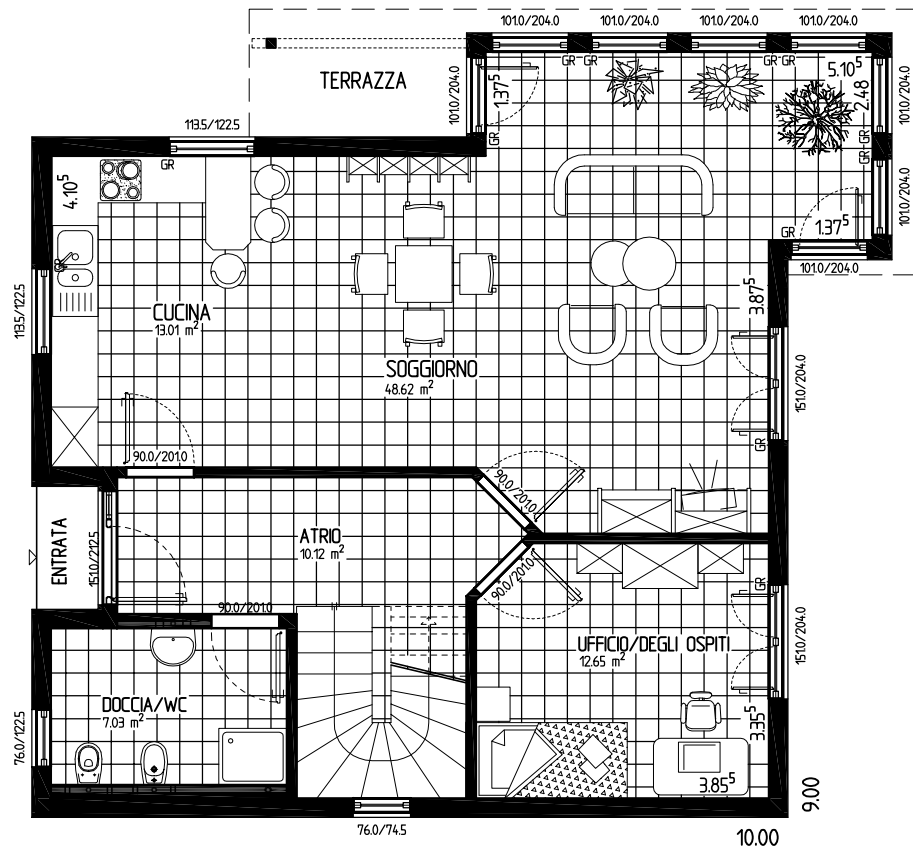


luogo, data committente consulente edile

RENSCH-HAUS GMBH · Ultrichshausen
Mottener Straße 13 · D-36148 Kalbach/Rhön
Tel. (09742) 91-0 · Fax (09742) 91-174
<http://www.rensch-haus.com>
eMail: info@rensch-haus.com

scala 1:100	disegno num. 3	data 07.09.10	elemento sezione
----------------	-------------------	------------------	---------------------

Casa La Spezia M

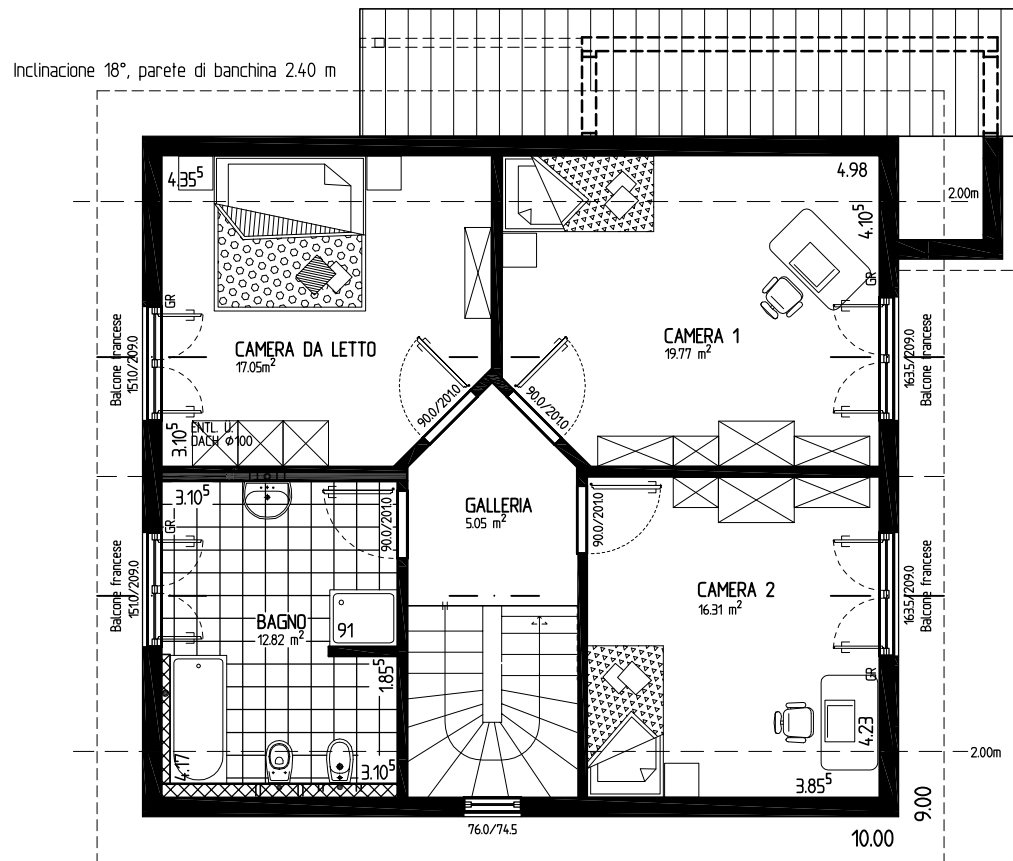


luogo, data committente consulente edile

RENSCH-HAUS GMBH · Ultrichshausen
Mottener Straße 13 · D-36148 Kalbach/Rhön
Tel. (09742) 91-0 · Fax (09742) 91-174
<http://www.rensch-haus.com>
eMail: info@rensch-haus.com

scala 1:100	disegno num. 1	data 07.09.10	elemento piano terra
----------------	-------------------	------------------	-------------------------

Casa La Spezia M



luogo, data committente consulente edile

 RENSCH-HAUS GMBH · Ultrichshausen
 Mottener Straße 13 · D-36148 Kalbach/Rhön
 Tel. (09742) 91-0 · Fax (09742) 91-174
 http://www.rensch-haus.com
 eMail: info@rensch-haus.com

scala 1:100	disegno num. 2	data 07.09.10	elemento piano soppalco
----------------	-------------------	------------------	----------------------------